

Specification

Lithium Polymer Battery Pack LP503040 560mAh 3.7V with Protection Circuit Module (PCM)

This data sheet describes the requirements and properties of lithium polymer rechargeable battery pack manufactured by Akyga Battery

Mechanical Characteristics

Type number: LP503040
 Designation IEC system: Lithium polymer battery pack
 Length: 40 ± 0.4 mm
 Width: 30 ± 0.4 mm
 Thickness: 5.0 ± 0.2 mm
 Cable: 100.0 ± 3 mm (26AWG UL1571)
 Weight approx: 12.0g

Electrical Specification

Rated capacity: 560mAh min, 570mAh typ.
 Nominal voltage: 3.7V
 Max. operating voltage range: 3.0V to 4.2V
 Charge voltage: 4.2 ± 50 mV
 Initial charge current: Standard charge: 112mA
 Rapid charge: 280mA
 Charging cut-off (A or B)
 A) By time: Standard charge: 5 hours
 Rapid charge: 2 hours
 B) By min. current: 1.2mA
 Max discharge current: 560mA
 Internal impedance (1kHz): approx 82mOhm
 Exp. cycle life: >500 cycles >80% of initial cap. (0.5C/0.5C)
 Cell protection
 Overcharge detection: 4.325 ± 25 mV
 (0.5 to 2.0 sec. delay, resume 4.075 ± 50 mV)
 Overdischarge detection: $3.00V \pm 80$ mV
 (6.25 to 250msec. delay, resume $2.9V \pm 100$ mV)

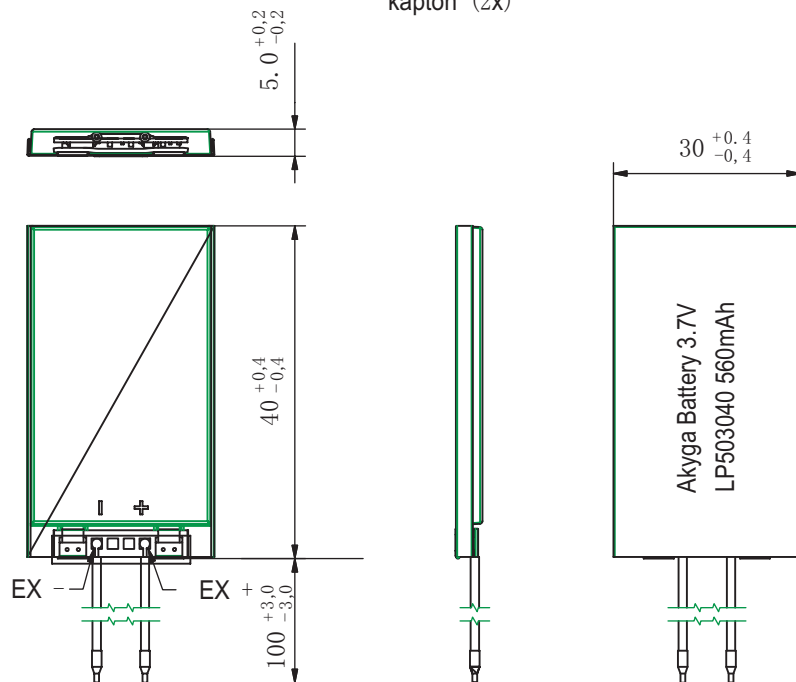
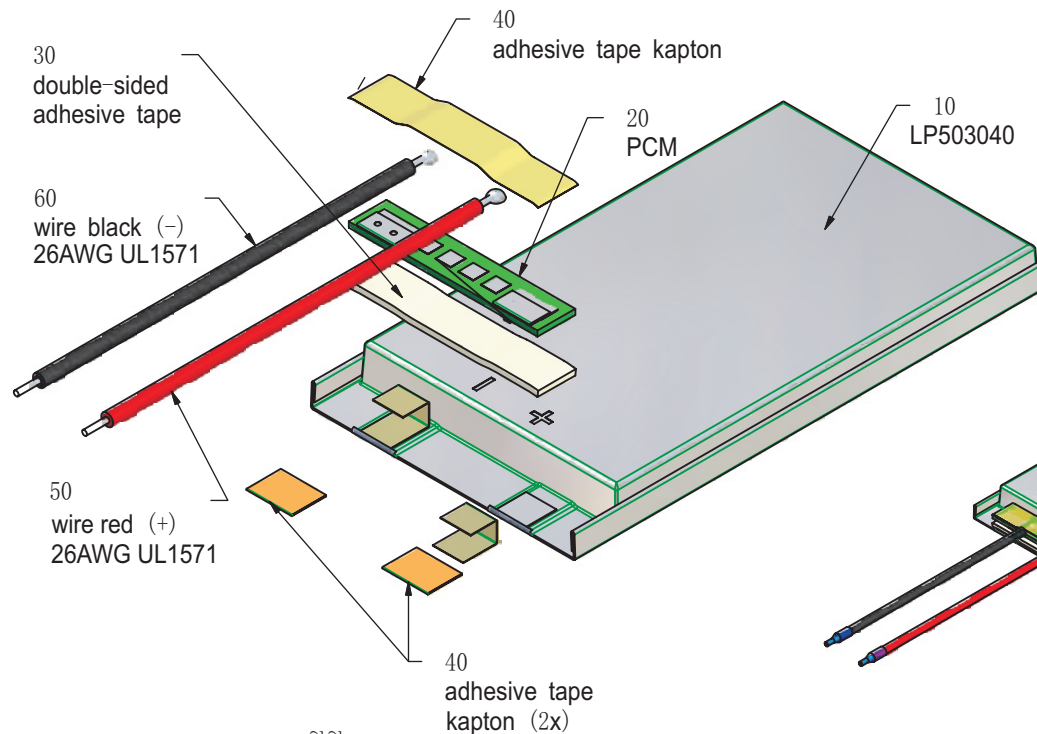
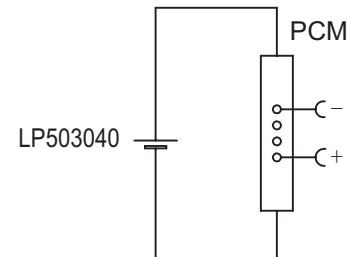
Ambient conditions

Temperature range
 Charge: 0 to +45°C
 Discharge: -20 to +60°C
 Charge retention/Storage: 1 year at -20 to 20°C >70%
 3 month at -20 to 45°C >70%
 1 month at -20 to 60°C >70%

Safety

Please follow handling and Safety Precautions Poliflex.

Circuit diagram



Index		Alteration		Date	Name	
Projection:		Diese Mae werden besonders gepruft This dimensions are considered inspectable		Material: 6645178 5192		
Mae in mm	Freimatoleranzen	Date	Name			
All dimensions in mm	Generaltoleranzen	Erst./Orig.	25.06.2015			Xie Qingfang
Als Betriebsgeheimnis anvertraut, alle Rechte vorbehalten.	up to 6: 0,1 over 6 up to 30: 0,2	Bearb./Desig.				
Proprietary data, company confidential, all rights reserved.	over 30 up to 100: 0,3 over 100: 0,5	Gepr./Check	25.06.2015	Guo Daxia		
		Benennung/Designation		Zchnng. / Dwg.Nr.		
		LP503040.3		3 FD_4344_56		
		Origin:		Index		