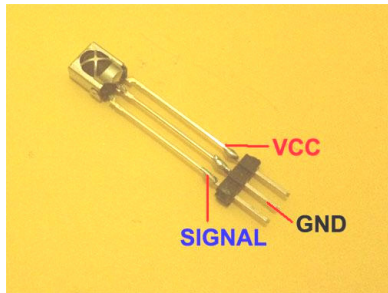
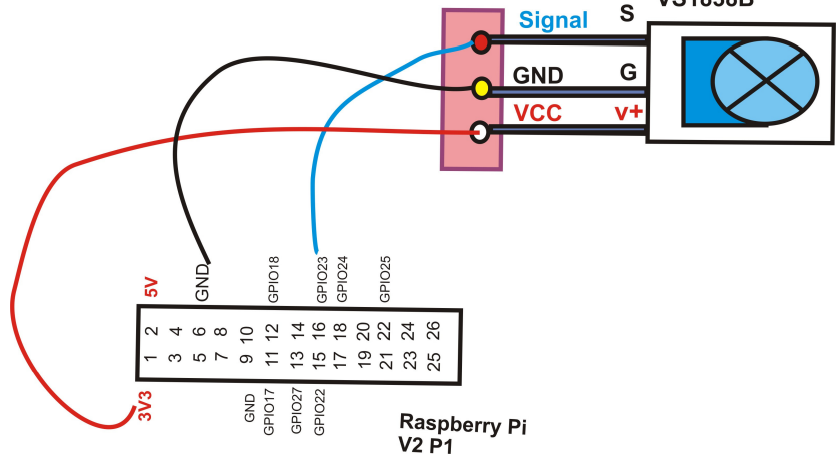


# Raspberry Pi - IR Receiver 38khz Sensor & Remote Control User Manual

## IR Receiver



IR Receiver 38khz VS1838B



## 38KHz IR Infrared Remote Control with battery

The new ultra-thin 38K universal infrared remote control, NEC encoding format 1-21-key remote control, USB port stereo, car MP3, foot bath, lighting, digital photo frame, microcontroller development board, learning board, etc..

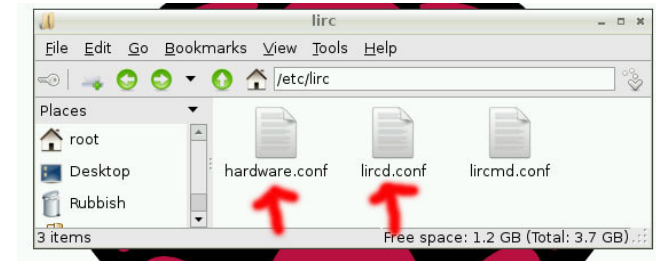
## features:

- Size: 86 x 40 x 6.0mm
- The remote control range of 8 - 10 m (infrared receiver quality of the middle whether the obstacles and other factors will affect the remote control distance)
- Battery: 3V lithium manganese battery
- IR carrier frequency: 38KHz Surface materials: 0.125mmPET

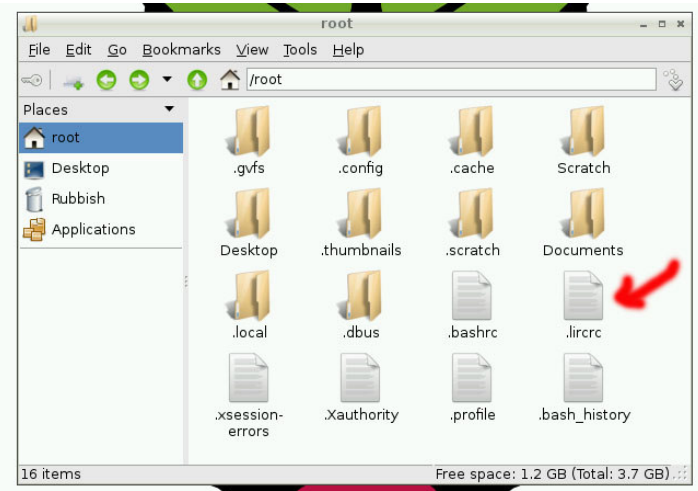
1. Sudo apt-get install lirc
2. sudo apt-get install python-lirc

3. Download 3 Remote control setting files

[lircd.conf](#) [.lircrc](#) [hardware.conf](#)



Copy hardware.conf & lircd.conf to /etc/lirc



Copy .lircrc to /root

```

192.168.0.16 - PuTTY
GNU nano 2.2.6 File: /etc/modules Modified
# /etc/modules: kernel modules to load at boot time.
#
# This file contains the names of kernel modules that should be loaded
# at boot time, one per line. Lines beginning with "#" are ignored.
# Parameters can be specified after the module name.

snd-bcm2835
spi-bcm2708
i2c-bcm2708
i2c-dev
lirc_dev
lirc_rpi gpio_in_pin=23

^G Get Help ^O WriteOut ^R Read File ^V Prev Page ^K Cut Text ^C Cur Pos
^X Exit ^U Justify ^W Where Is ^N Next Page ^U UnCut Text ^I To Spell

```

```

sudo nano /etc/modules
add      lirc_dev
         lirc_rpi gpio_in_pin=23

```



```

192.168.0.26 - PuTTY
IRR_v2.py Pi_Scratch_v253 Pi_Scratch_v256.tar ServoArm
Logger Pi_Scratch_v253.tar python_games
root@raspberrypi:/home/pi# sudo python IRR_v2.py
IRR_v2.py:7: RuntimeWarning: This channel is already in use, continuing anyway.
Use GPIO.setwarnings(False) to disable warnings.
GPIO.setup(17, 0)
CHAN_DWN
CHAN_SEL
CHAN_UP
PREV
NEXT
PLAY
VOL_DWN
VOL_UP
EQ
BUT_0
BUT_100+
BUT_200+
BUT_1
BUT_2
BUT_3
BUT_4
BUT_5
BUT_6
BUT_7
BUT_8
BUT_9

```

IRR\_v2.py demo

```

192.168.0.26 - PuTTY
permitted by applicable law.
Last login: Tue Feb 25 14:23:24 2014
root@raspberrypi:~# irw
00000000000000000001 00 BUT_CHANNEL_DOWN /etc/lirc/lircd.conf
00000000000000000002 00 BUT_CHANNEL_SELECT /etc/lirc/lircd.conf
00000000000000000003 00 BUT_CHANNEL_UP /etc/lirc/lircd.conf
00000000000000000004 00 BUT_PREV /etc/lirc/lircd.conf
00000000000000000005 00 BUT_NEXT /etc/lirc/lircd.conf
00000000000000000006 00 BUT_PLAY /etc/lirc/lircd.conf
00000000000000000007 00 BUT_VOL_DOWN /etc/lirc/lircd.conf
00000000000000000008 00 BUT_VOL_UP /etc/lirc/lircd.conf
0000000000000000000a 00 BUT_0 /etc/lirc/lircd.conf
0000000000000000000b 00 BUT_100 /etc/lirc/lircd.conf
0000000000000000000c 00 BUT_200 /etc/lirc/lircd.conf
0000000000000000000d 00 BUT_1 /etc/lirc/lircd.conf
0000000000000000000e 00 BUT_2 /etc/lirc/lircd.conf
0000000000000000000f 00 BUT_3 /etc/lirc/lircd.conf
00000000000000000010 00 BUT_4 /etc/lirc/lircd.conf
00000000000000000011 00 BUT_5 /etc/lirc/lircd.conf
00000000000000000012 00 BUT_6 /etc/lirc/lircd.conf
00000000000000000013 00 BUT_7 /etc/lirc/lircd.conf
00000000000000000014 00 BUT_8 /etc/lirc/lircd.conf
00000000000000000015 00 BUT_9 /etc/lirc/lircd.conf

```

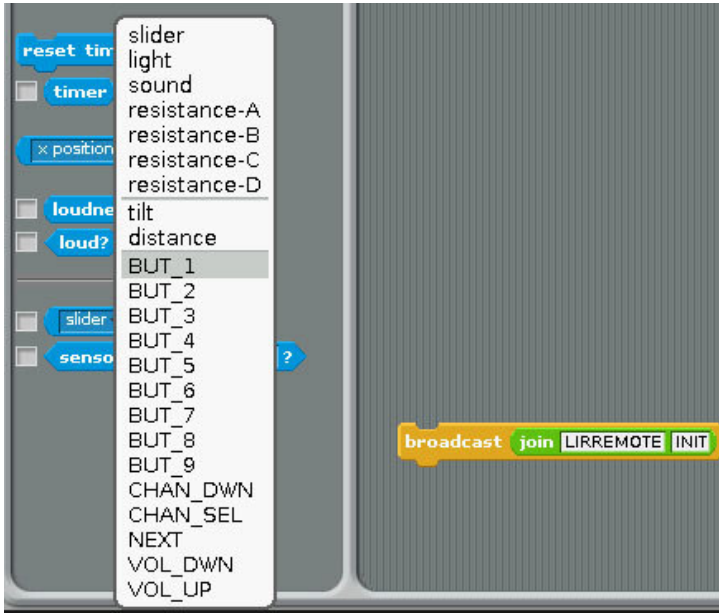
irw read information from remote control

```

192.168.0.26 - PuTTY
root@raspberrypi:~# irexec
Channel Down pressed
Channel SELECT pressed
Channel UP pressed
PREV pressed
NEXT pressed
PLAY pressed
VOL DOWN pressed
VOL UP pressed
EQ pressed
0 pressed
100+ pressed
200+ pressed
1 pressed
2 pressed
3 pressed
4 pressed
5 pressed
6 pressed
7 pressed
8 pressed
9 pressed

```

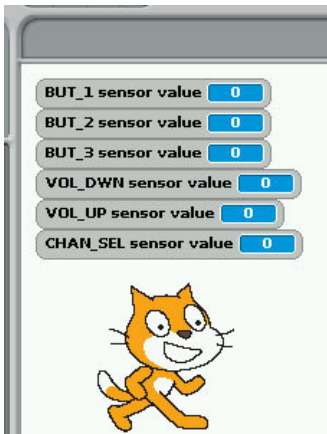
irexec read information from remote control



Scratch setting demo

Command " LIRREMOTE" +"INIT" to active IR REMOTE CONTROL

- 1.broadcast "LIRREMOTEINIT"
2. after broadcast Press the key in remote control you want use in Scratch in Sensing --> Slider , you will see the key you press in the list



Install information

<http://piface.github.io/pifacecad/lirc.html>

product detail

<http://www.pridopia.co.uk/pi-ir-remote-set.html>

.Pi\_Scratch interface software download from our web site

<http://www.pridopia.co.uk/rs-pi-set-scratch.html>

### Package Content

- 1x Rs-Pi IR receiver & remote control
- 3x 20cm male to male cable
- 1x manual

