

LAMP KIT ASSEMBLY GUIDE

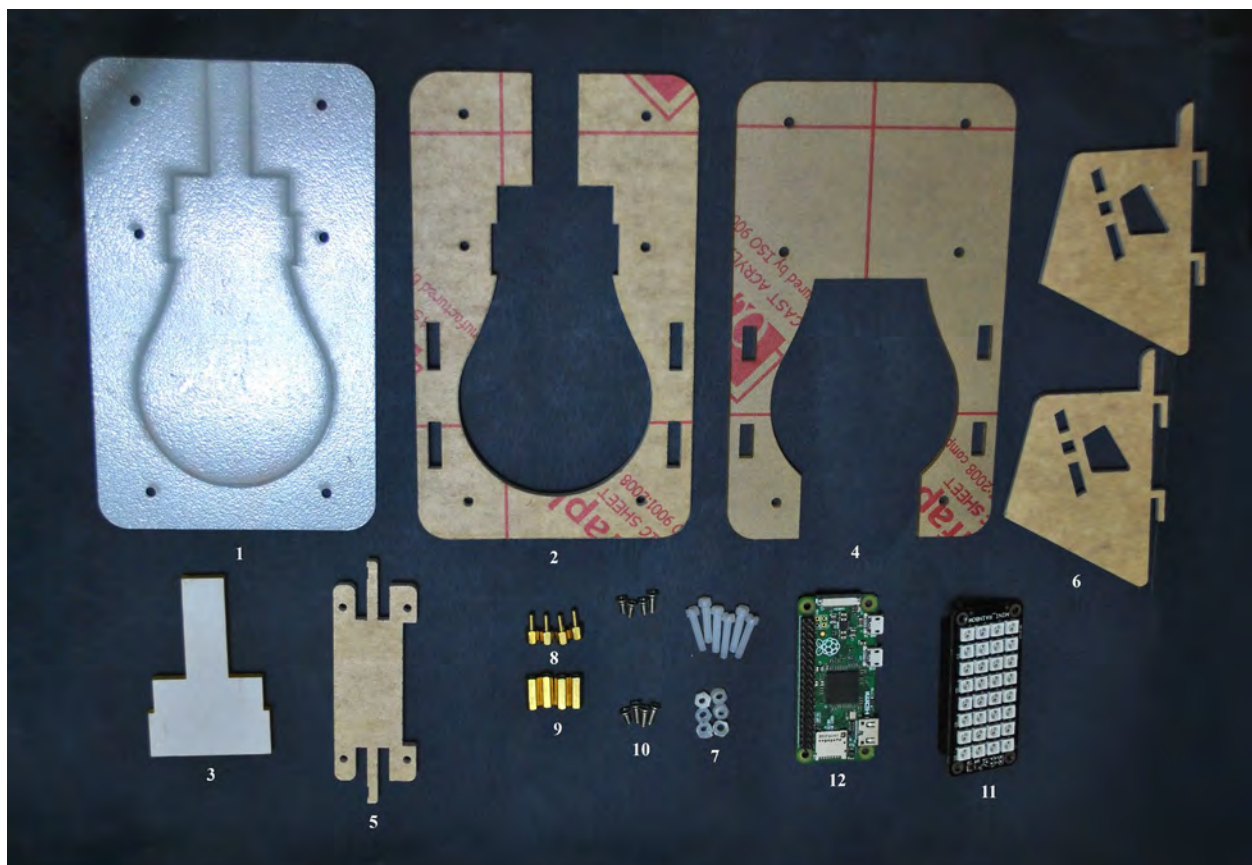
LAMP KIT

This tutorial will guide you through how to assemble your LAMP Kit. Use the LAMP as a night light on your bedside table, or just have it sit on your desk, as it lights up your working area!

The LAMP Kit uses [RAINBOW 32 / 64](#) programmable pixels that you can code, and have it fade through all the colors of the rainbow. Use it to reflect your mood, or have it fade through colors that match sunset and sunrise.

THE LAMP KIT CONTAINS THE FOLLOWING PARTS:

- | | |
|-------------------------------|--|
| 1. Clear frosted front layer | 7. 6x M3 nylon bolts and nuts |
| 2. White middle layer | 8. 4x M2 5x5 M/F metal standoffs |
| 3. Yellow lamp fitting insert | 9. 4x M2 5x12 F/F metal standoffs |
| 4. Clear back layer | 10. 8x M2 5x8 screws |
| 5. White PCB holder | 11. Rainbow 32 or 64 (included or sold separately) |
| 6. 2x white legs | 12. Raspberry Pi Zero (optional) |



Review the photos below on how to assemble the LAMP Kit!

STEP 1



STEP 2



STEP 3



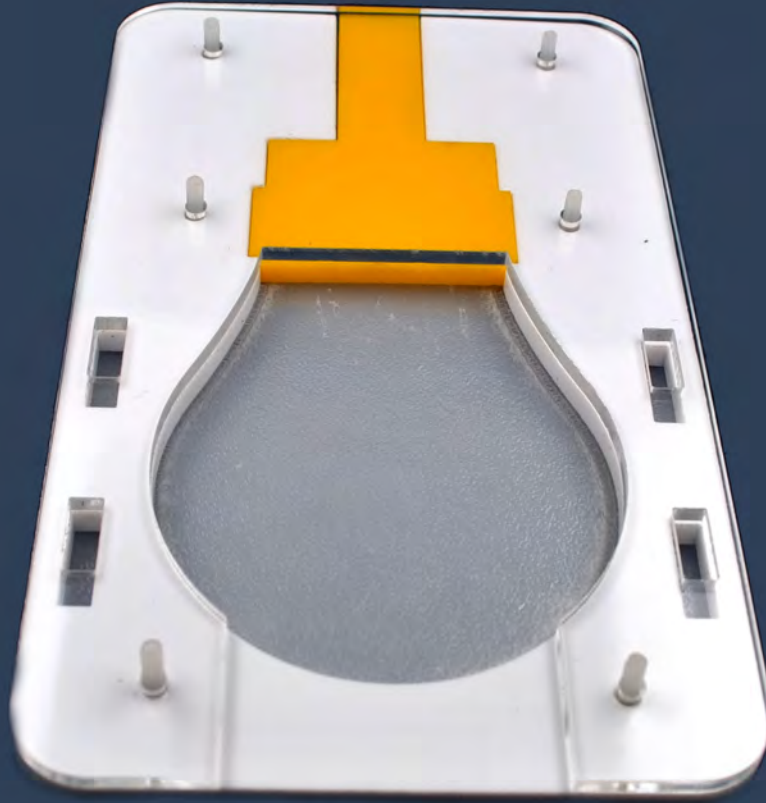
*** TAKE THE WHITE MIDDLE LAYER AND PLACE IT ON TOP OF THE FRONT LAYER SLIDING IT INTO THE BOLTS.**

STEP 4



*** THE YELLOW FITTING INSERT FITS INTO THE GAP AT THE TOP**

STEP 5



*** NOW TAKE THE CLEAR BACK LAYER, PLACE AND SLIDING IT INTO BOLTS**

STEP 6



*** NOW LOCK ALL BOLTS WITH M3 NUTS AND TRIM THE EXCESS BOLTS OFF**

STEP 7

