

# Specification

**Lithium Polymer Battery Pack (LP3867100) 2400mAh 3.7V with Protection Circuit Module (PCM)**  
 This data sheet describes the requirements and properties of lithium polymer rechargeable battery pack manufactured by AKYGA

### Mechanical Characteristics

Type number: LP3867100  
 Designation IEC system: Lithium polymer battery pack  
 Length:  $100 \pm 0.4\text{mm}$   
 Width:  $67 \pm 0.4\text{mm}$   
 Thickness:  $3.8 \pm 0.2\text{mm}$   
 Cable:  $150 \pm 3.0\text{mm}$  (26AWG UL 1007)  
 Weight: appr. 42.0g  
 Connector: JST 2.54 male & female connectors

### Electrical Specification

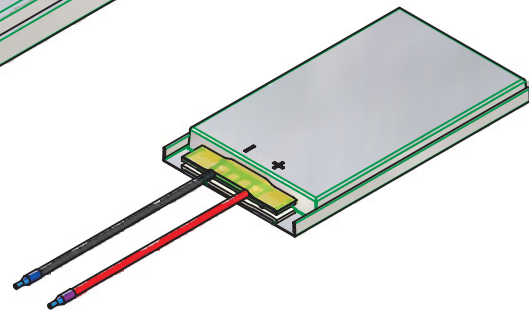
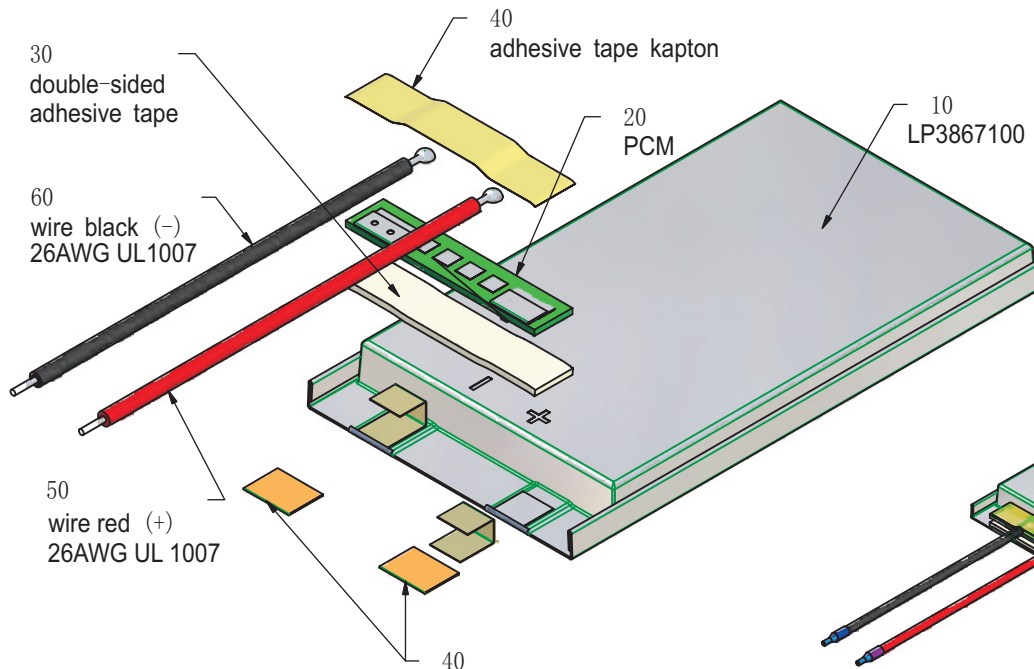
Rated capacity: 2400mAh min, 2440mAh typ.  
 Nominal voltage: 3.7V  
 Max. operating voltage range: 3.0V to 4.2V  
 Charge voltage:  $4.2 \pm 50\text{mV}$   
 Initial charge current: Standard charge: 1200mA  
 Rapid charge: 2400mA  
 Charging cut-off (A or B)  
 A) By time: Standard charge: 7 hours  
 Rapid charge: 4 hours  
 B) By min. current: 48.0mA  
 Max continuous discharge current: 2400mA  
 Exp. cycle life: >500 cycles >70% of initial cap. (0.5C/0.5C)  
 Internal impedance (1kHz): approx 36mOhm  
 Cell protection  
 Overcharge detection:  $4.325 \pm 25\text{mV}$   
 (0.5 to 2.0 sec. delay, resume  $4.075 \pm 50\text{mV}$ )  
 Overdischarge detection:  $3.00\text{V} \pm 25\text{mV}$   
 (6.25 to 250msec. delay, resume  $2.9\text{V} \pm 100\text{mV}$ )

### Ambient conditions

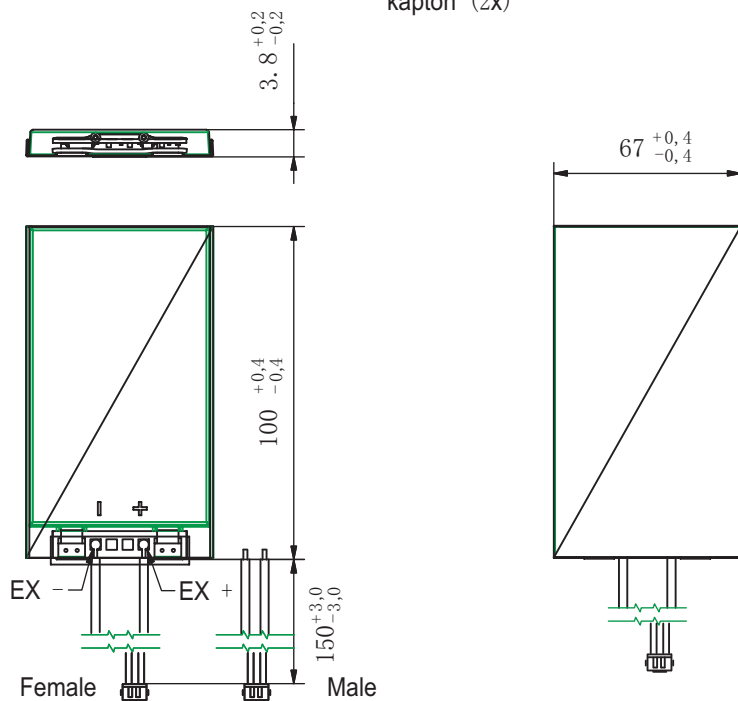
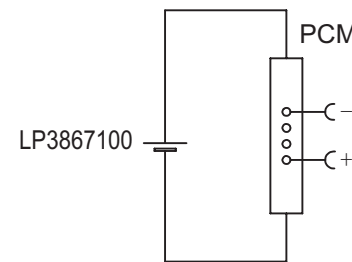
Temperature range  
 Charge: 0 to  $+45^\circ\text{C}$   
 Discharge:  $-20$  to  $+60^\circ\text{C}$   
 Charge retention/Storage: 1 year at  $-20$  to  $20^\circ\text{C}$  >70%  
 3 month at  $-20$  to  $45^\circ\text{C}$  >70%  
 1 month at  $-20$  to  $60^\circ\text{C}$  >70%

### Safety

Please follow handling and Safety Precautions Poliflex.



Circuit diagram



Index	Alteration		Date	Name
Projection:		Diese Mae werden besonders gepruft This dimensions are considered inspectable		Material 6645175 6819
Mae in mm All dimensions in mm	Freimatoleranzen Generaltolerances	Date	Name	
Als Betriebsgeheimnis anvertraut, alle Rechte vorbehalten.	up to 6 ' 0,1 over 6 up to 30 ' 0,2 over 30 up to 100 ' 0,3 over 100 ' 0,5	Erst./Orig. 12. 08. 2013	Xie Qingfang	
Proprietary data, company confidential, all rights reserved.		Bepr./Check. 12. 08. 2013	Guo Daxia	
	Benennung/Designation	Zchg. / Dwg. Nr.		Index
	LP3867100	3 FD_2566_18		
	Origin:			

