



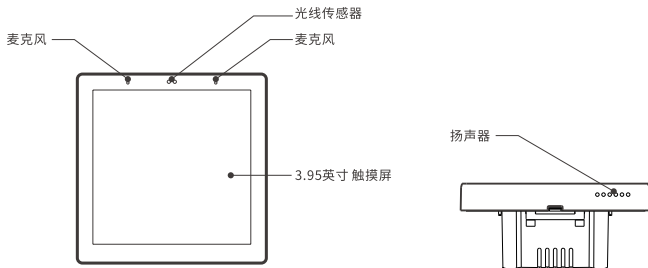
NSPanel Pro

User manual V1.0



NSPanel Pro Smart Home Control Panel

产品介绍



⚠ 设备重量 < 1Kg, 建议安装高度 < 2米。

功能特点

NSPanel Pro 是一款融合了屏幕触控、Zigbee网关、安防功能的智能场景面板。通过添加组件，随时在屏幕上控制多种设备；内置Zigbee网关，支持添加多种Zigbee子设备；可以设置三种安防模式，守护你的家庭安全；更可以用作显示器，搭配摄像头在屏幕上实时监控。



内置 Zigbee 网关



智能控制面板



设置闹钟



场景联动



查看摄像头画面



家庭安防



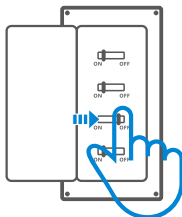
布防/撤防



桌面主题切换

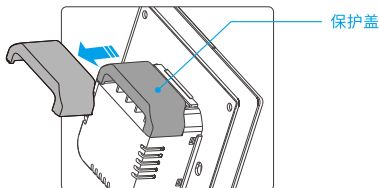
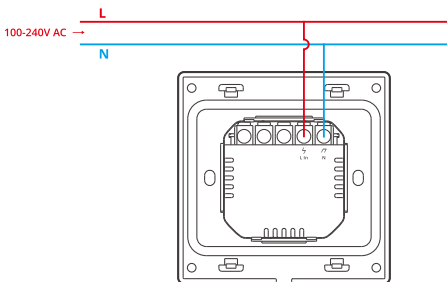
使用说明

1. 断电



⚠ 设备安装、故障维修请由专业资质电工操作。切勿在设备通电时进行接线操作或触碰到接线端子，以免发生触电危险！

2. 接线



当墙上暗盒为塑胶材质且尺寸较小时，可不安装保护盖。金属暗盒存在导电风险，请务必安装保护盖。

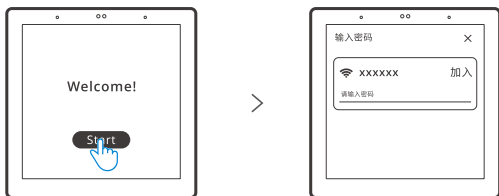
⚠ 确保线路接入无误。

3. 下载“易微联”App



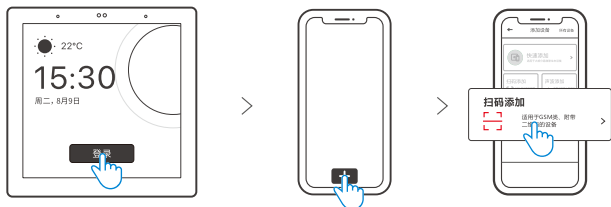
Android™ & iOS

4. 上电



开机后, 点击“Start”, 选择Wi-Fi及输入密码, 再根据App提示操作进入设备主界面。

5. 登录



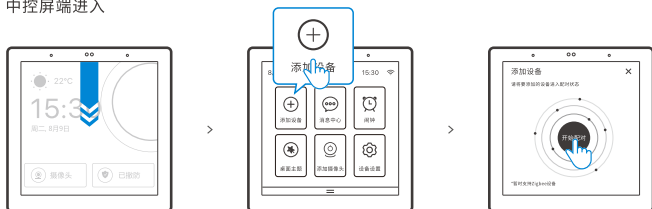
在设备上点击“登录”, 然后在eWeLink App 点击“+”选择“扫码添加”, 扫描设备屏幕上显示的二维码即可。

添加Zigbee设备

1. 进入配对模式

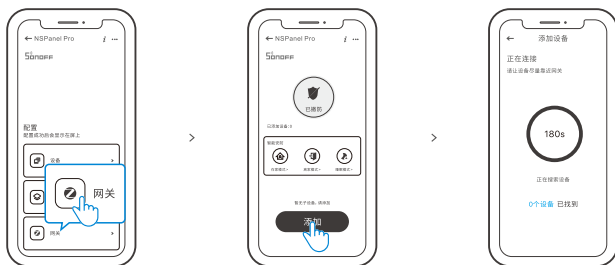
方法1:

中控屏端进入



方法2:

eWeLink App端进入



2. 将Zigbee设备设置进入配对模式，根据提示进行操作，完成添加。

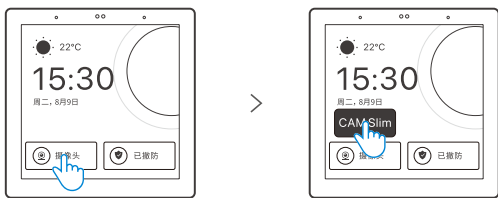
添加Wi-Fi设备

1. 先将Wi-Fi设备与eWeLink App连接。
2. 在中控屏App主界面, 选择"设备", 将已连接的Wi-Fi设备同步中控屏即可。



⚠ 设备添加完成后, 即可在中控屏端进行查看、控制。

添加摄像头



在App端添加同步摄像头后, 选择屏幕端“摄像头”在点击已添加的摄像头如“CAM Slim”, 即可在屏幕上查看摄像头的实时画面。

⚠ 可以下拉屏幕选择“添加摄像头”, 根据提示添加RTSP摄像头或者DIY摄像头。

智能安防



智能安防有3种模式，分别为在家模式，离家模式和睡眠模式。在App端选择模式开启触发子设备和设置报警提示音。

ⓘ 添加子设备后才能使用智能安防功能。

产品参数

型号	NSPanel86PB, NSPanel86PW
输入	100-240V AC 50/60Hz
最大功耗	5W MAX ; 150mA
屏幕规格	3.95" (电容屏)
屏幕分辨率	480 x 480
Wi-Fi	IEEE 802.11 b/g/n 2.4GHz
蓝牙标准	BT2.1+EDR, BT 3.0, BT4.2
Zigbee	IEEE 802.15.4 (Zigbee 3.0)
App支持系统	Android & iOS
工作温度	0°C~40°C
外壳材料	PC V0 + 冷轧钢 + 钢化玻璃
产品规格	86x86x39.5mm

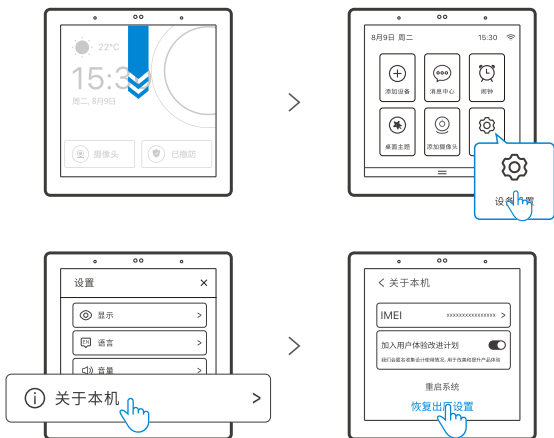
恢复出厂设置

方法1:

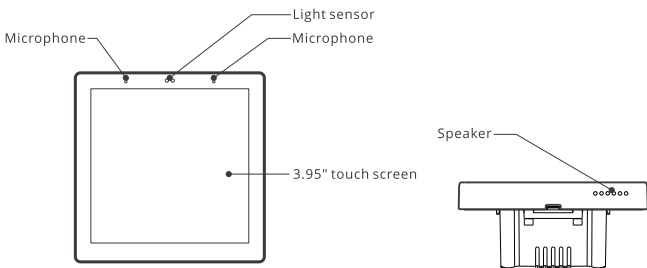
在eWeLink App端“删除设备”，设备即恢复出厂设置。

方法2:

在中控屏端，根据下图指引完成恢复出厂设置。



Product Introduction



⚠ The device weight is less than 1 kg. The installation height of less than 2 m is recommended.

Features

NSPanel Pro is a smart scene control panel integrating touch screen, Zigbee hub and smart security feature. You can control the devices by adding them as widgets on the panel, add various Zigbee sub-devices through the built-in Zigbee gateway, set 3 security modes to guard your home, view the live view on the panel through an added camera.



Hub

Built-in Zigbee Hub



Smart Home Control



Alarm Clock Setting



Smart Scenes



View Camera Live



Home Security



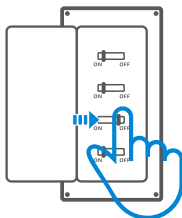
Arm/Disarm



Wallpaper Theme Switching

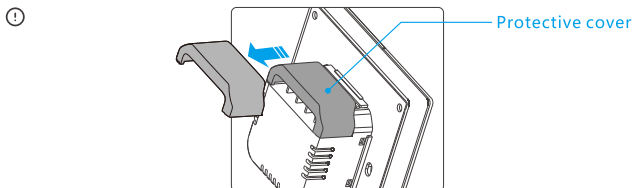
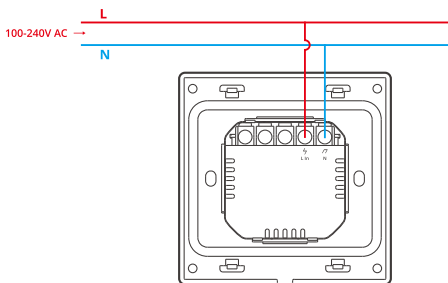
Operating Instruction

1. Power off



⚠ Please install and maintain the device by a professional electrician. To avoid electric shock hazard, do not operate any connection or contact the terminal connector while the device is powered on!

2. Wiring instruction



When the wall-mounting box is made of plastic and the size is small, the protective cover can be omitted. If your wall-mounting box is made of metal, please be sure to install it with the protective cover.

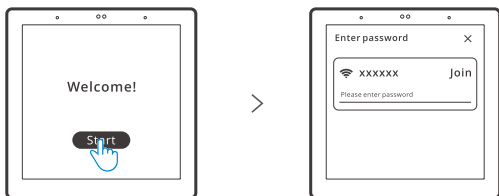
⚠ Make sure all wires are connected correctly.

3. Download the eWeLink App



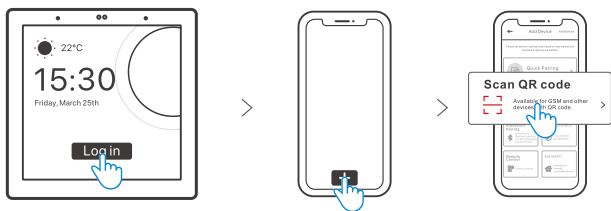
Android™ & iOS

4. Power on



After powering on, tap "Start" to select the Wi-Fi and enter the password, then you will enter the main interface by following the App prompts.

5. Log In



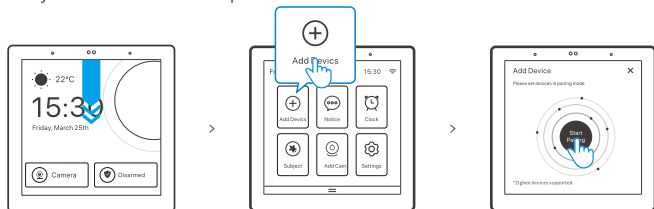
Tap "Log In" on the device and tap "+" on the eWeLink App to select "Scan QR code", then scan the QR code on the device screen by your App.

Add Zigbee devices

1. Pairing mode entry

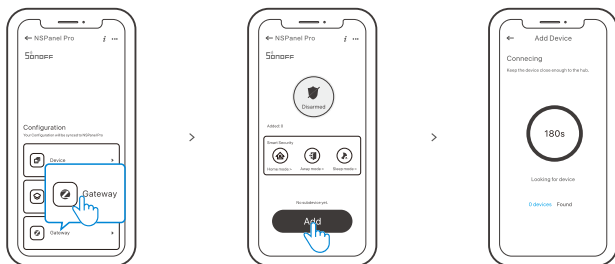
Method 1:

Entry on the central control panel



Method 2:

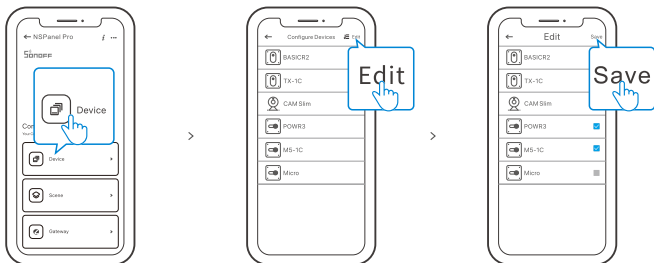
Entry on the eWeLink App



2. Set the Zigbee device into the pairing mode and complete the adding follow the prompts.

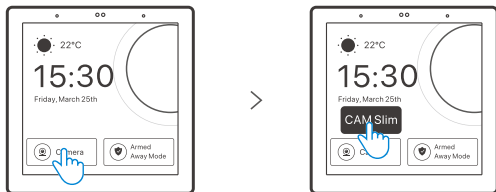
Add Wi-Fi devices

1. Add Wi-Fi devices on the eWeLink App.
2. Select "Device" on the NSPanel Pro interface of the App, sync the added Wi-Fi devices to the panel.



ⓘ After adding the devices, they can be checked and controlled on the panel.

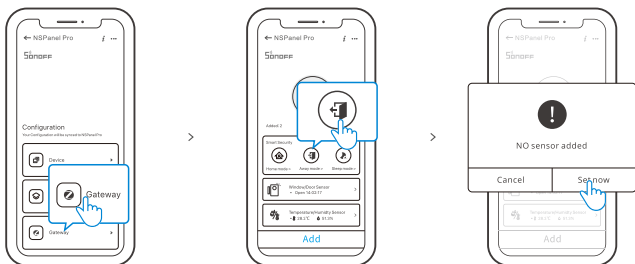
Add Camera



Add the camera on the App and configure it on the NSPanel Pro page, then tap "Camera" and select the added camera like "CAM Slim" on the panel to view the live view on the panel through the camera.

ⓘ You can also drop down the screen to select "Add camera" and add PTSP camera or DIY camera follows the prompts.

Smart Security



There are 3 modes of Smart Security, are home mode, away mode and sleep mode. Select the mode on the App to enable the triggerable sub-devices and set the alarm sound.

⚠ Smart Security can only be used after adding sub-devices

Specifications

Model	NSPanel86PB, NSPanel86PW
Input	100-240V AC 50/60Hz
Max. power consumption	5W MAX ; 150mA
Screen size	3.95" (Capacitive touch panel)
Screen resolution	480 x 480
Wi-Fi	IEEE 802.11 b/g/n 2.4GHz
Bluetooth	BT2.1+EDR , BT 3.0 , BT4.2
Zigbee	IEEE 802.15.4 (Zigbee 3.0)
App operating systems	Android & iOS
Working temperature	0°C~40°C
Casing material	PC V0 + CRS + Tempered glass panel
Product Size	86x86x39.5mm

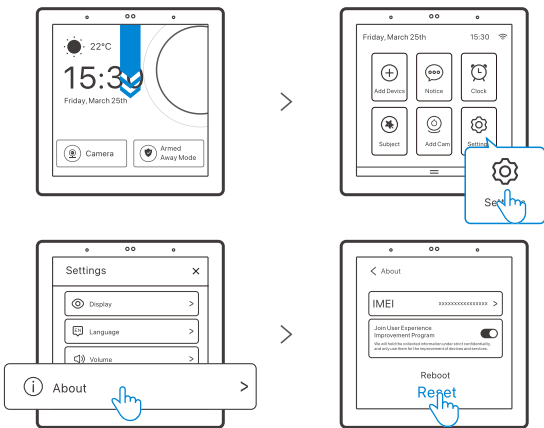
Factory Reset

Method 1:

Deleting the device on the eWeLink App indicates you restore it to factory setting.

Method 2:

Complete the factory reset follow the prompts on the panel.



Hereby, Shenzhen Sonoff Technologies Co., Ltd. declares that the radio equipment type NSPanel86PB, NSPanel86PW are in compliance with Directive 2014/53/EU. The full text of the EU declaration of conformity is available at the following internet address:

<https://sonoff.tech/usermanuals>

The logo for Sonoff, featuring a stylized 'S' with three curved lines above it representing radio waves, followed by the word 'SONOFF' in a bold, blocky, sans-serif font.

Shenzhen Sonoff Technologies Co., Ltd.

3F & 6F, Bldg A, No. 663, Bulong Rd, Shenzhen, Guangdong, China
ZIP code: 518000 Website: sonoff.tech

MADE IN CHINA

